

ALTERATIONS AND ADDITIONS TO CHELMSFORD POLICY BOARD

16 JANUARY 2025

AGENDA ITEM 5

CHELMSFORD LOCAL PLAN – REGULATION 19 PRE-SUBMISSION CONSULTATION DOCUMENTS

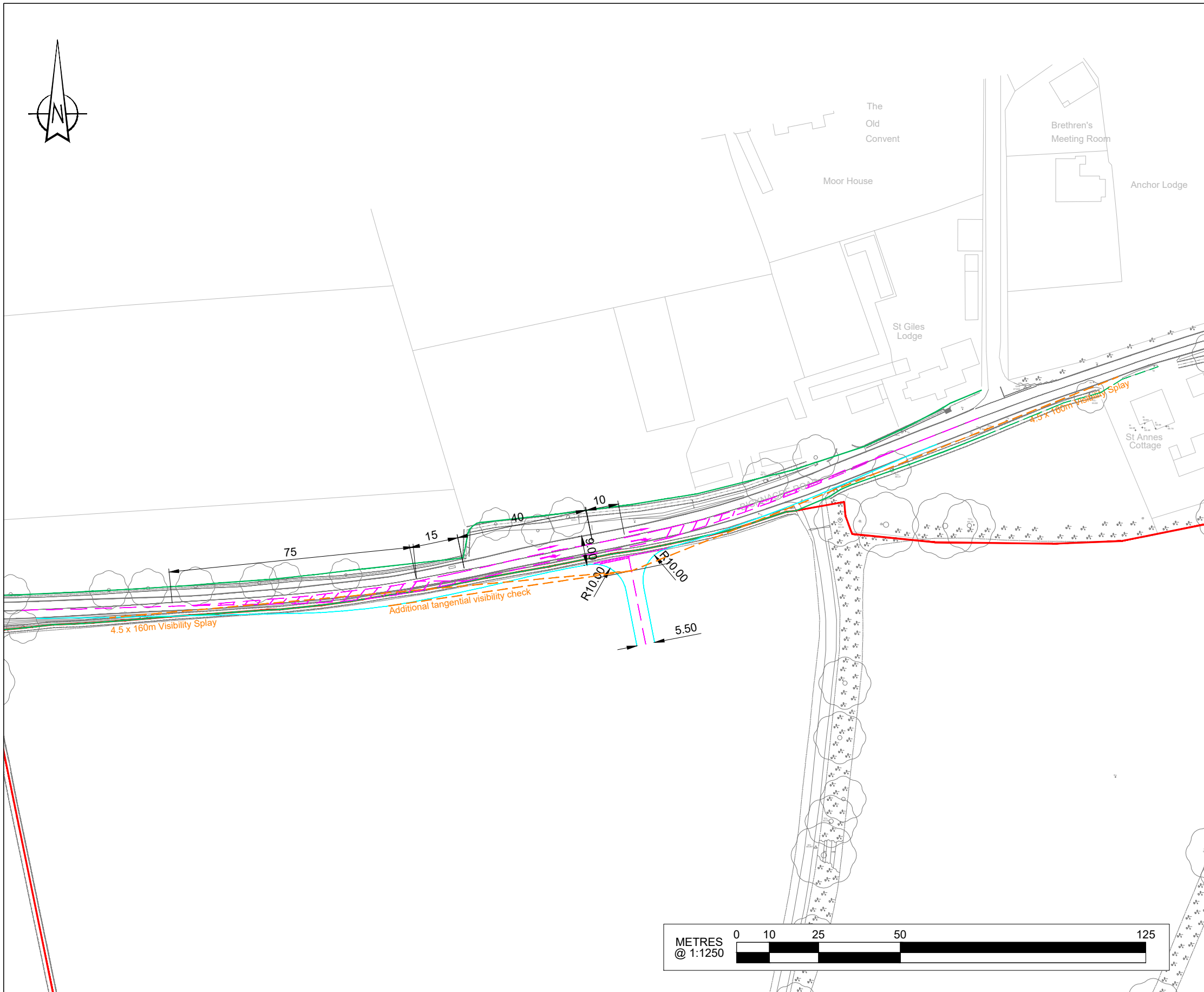
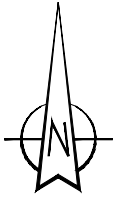
Appendix 1 – Preferred Options ‘You Said, We Did’ Feedback Report

New text is shown as underlined.

Deleted text is shown as ~~strikethrough~~.

| Reference | Change | Reason |
|------------------|--|---------------------|
| Page 3 | Amend 4 th bullet: Hammonds Farm and Junction 18 of the A12 (SGS16a-b) received very large numbers of public objections, with an organised campaign established by Little Baddow, Danbury, Boreham <u>and Sandon</u> Parish Councils coordinating responses | Correct an omission |
| Page 23 | Amend last paragraph: The Council commissioned Essex Highways to review and consider the key issues raised in the highway and transportation responses received to the consultation. This report entitled Preferred Spatial Approach - Response to Representations (November 2024) is given in Appendix 2 and includes a review of the Transport Technical Note, prepared by Stomor (June 2024) on behalf of Little Baddow, Danbury, Boreham <u>and Sandon</u> Parish Councils. The Preferred Spatial Approach - Response to Representations (November 2024) report has been used by CCC to understand and respond to matters of concern raised in this You Said We Did report and to inform the Pre-Submission Local Plan. | Correct an omission |
| Page 112 | Amend third row: The Little Baddow, Danbury, Boreham <u>and Sandon</u> Parish Councils response included a reference to Little Baddow Parish Councils proposals for three conservation areas to be designated; at Great Graces, St Marys Church and North Hill. Further work is being undertaken to explore a conservation area on North Hill by CCC. Conservation areas at Grace Graces and St Marys Church are not justified and the duty to preserve and enhance the setting of the various | Correct an omission |

| Reference | Change | Reason |
|------------|--|---------------------|
| | designated heritage assets at these sites is considered adequate. | |
| Page 113 | Amend seventh row: The Council commissioned Essex Highways to review and consider the key issues raised in the highway and transportation responses received to the consultation. This is given in Appendix 2 and includes a review of the Transport Technical Note, prepared by Stomor (June 2024) on behalf of Little Baddow, Danbury, Boreham <u>and Sandon</u> Parish Councils. Essex Highways response has been used by CCC to understand and respond to matters of concern raised in this You Said We Did report and to inform the Pre-Submission Local Plan. | Correct an omission |
| Page 114 | Amend seventh row: In response to the Flood Risk Summary Statement prepared by Stomor (June 2024) on behalf of Little Baddow, Danbury, Boreham <u>and Sandon</u> Parish Councils, the Level 2 SFRA site summary table including the key messages section has been amended and updated. An updated site boundary has also been tested and included in the assessment. | Correct an omission |
| Page 122 | Amend eighth row: The Council commissioned Essex Highways to review and consider the key issues raised in the highway and transportation responses received to the consultation. This is given in Appendix 2 and includes a review of the Transport Technical Note, prepared by Stomor (June 2024) on behalf of Little Baddow, Danbury, Boreham <u>and Sandon</u> Parish Councils. Essex Highways response has been used by CCC to understand and respond to matters of concern raised in this You Said We Did report and to inform the Pre-Submission Local Plan. | Correct an omission |
| Appendix 4 | Add the attached plans titled 'Site Access Ghost Island Bicknacre Road' | Completeness |



NOTES:

1. Do not scale from this drawing, work to figured dimensions only.
2. Dimensions are in metres unless stated otherwise.

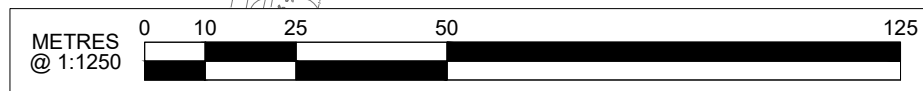
KEY:

- 4.5m x 160m Visibility Splay*
- Highway Boundary confirmed by ECC
- Interpolated Highway Boundary subject to confirmation by ECC

*Table 2.10 DMRB CD109 design speed 85kph (see below). Based on speed survey data of 85th percentile Eastbound: 76.2kph (Eastbound), 79.5kph (Westbound), August 2024

| Design speed kph | 120 | 100 | 85 | 70 | 60 | 50 | V2/R |
|----------------------------------|-----|-----|-----|-----|----|----|------|
| Stopping sight distance (metres) | | | | | | | |
| Desirable minimum | 295 | 215 | 160 | 120 | 90 | 70 | - |
| One step below desirable minimum | 215 | 160 | 120 | 90 | 70 | 50 | - |

Designed in accordance with DMRB CD 109, CD123 and Essex Design Guide. See above for design speed



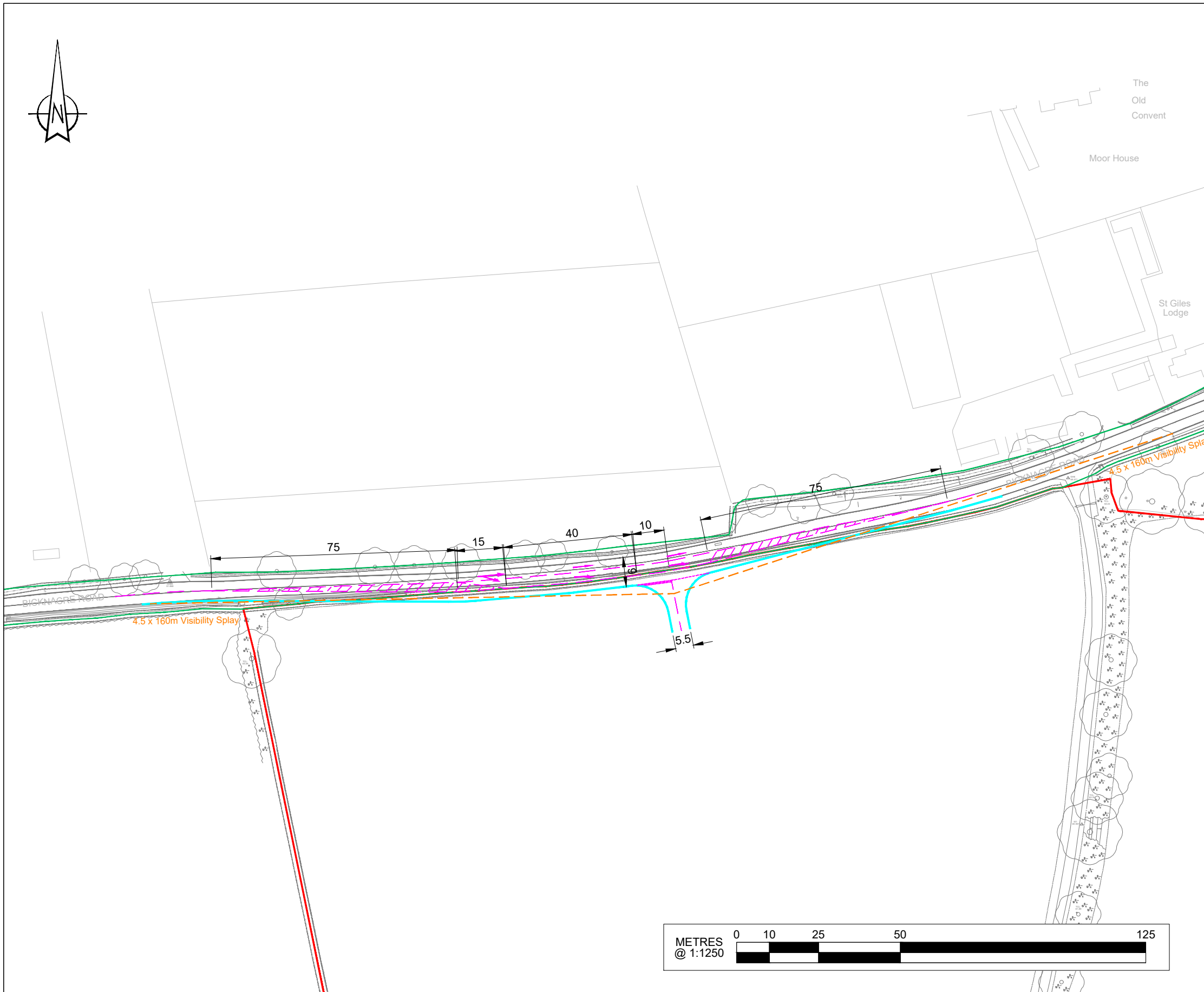
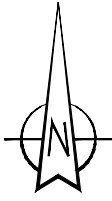
| | | | | | |
|-----|---|-----|-----|-----|----------|
| P03 | Amended Location | GR | PC | PC | 11.10.24 |
| P02 | Confirmation of Highway and Site Boundaries | GR | MN | PC | 11.09.24 |
| P01 | Initial | GR | PC | PC | 28.08.24 |
| REV | DESCRIPTION | DRN | CHK | APP | DATE |

Pell Frischmann

5TH FLOOR, 85 STRAND, LONDON WC2R 0DW
 Telephone +44 (0)207 486 3661
 Email: pflondon@pellfrischmann.com
 www.pellfrischmann.com

| | | | |
|---------|--|--|--|
| Project | Bicknacre | | |
| Title | Site Access Ghost Island Bicknacre Road | | |

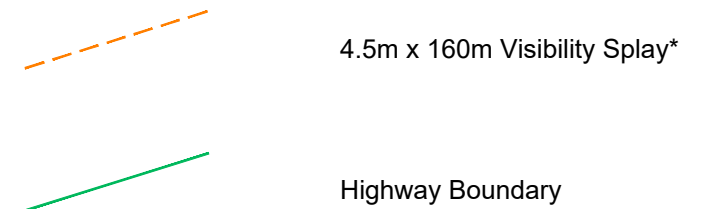
| | | | | | |
|----------|---------------------|------------|-------------|--------------------------------|--|
| Client | Welbeck Land | | Status | INITIAL | |
| Drawn | GR | 27.08.2024 | Status Code | - | |
| Designed | GR | 27.08.2024 | Scale | 1:1250@A3 | |
| Checked | PC | 28.08.2024 | Revision | P03 | |
| Approved | PC | 28.08.2024 | Project No. | 109436-XXXX-DR-H-000003 | |



NOTES:

1. Do not scale from this drawing, work to figured dimensions only.
2. Dimensions are in metres unless stated otherwise.

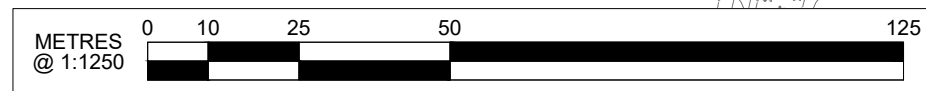
KEY:



*Table 2.10 DRMB CD109 design speed 85kph (see below). Based on speed survey data of 85th percentile Eastbound: 76.2kph (Eastbound), 79.5kph (Westbound), August 2024

| Design speed kph | 120 | 100 | 85 | 70 | 60 | 50 | V2/R |
|----------------------------------|-----|-----|-----|-----|----|----|------|
| Stopping sight distance (metres) | | | | | | | |
| Desirable minimum | 295 | 215 | 160 | 120 | 90 | 70 | - |
| One step below desirable minimum | 215 | 160 | 120 | 90 | 70 | 50 | - |

Designed in accordance with DMRB CD 109, CD123 and Essex Design Guide. See above for design speed



| | | | | | |
|-----|---|-----|-----|-----|----------|
| P02 | Confirmation of Highway and Site Boundaries | GR | MN | PC | 11.09.24 |
| P01 | Initial | GR | PC | PC | 28.08.24 |
| REV | DESCRIPTION | DRN | CHK | APP | DATE |

Pell Frischmann

5TH FLOOR, 85 STRAND, LONDON WC2R 0DW
 Telephone +44 (0)207 486 3661
 Email: pflondon@pellfrischmann.com
 www.pellfrischmann.com

Project
Bicknacre

Title
**Site Access Ghost Island
 Bicknacre Road**

| | | | | | | |
|----------|---------------------|------------|-------------|--------------------------|----------------|--|
| Client | Welbeck Land | | | Status | INITIAL | |
| | | | | Status Code | - | |
| Drawn | GR | 27.08.2024 | Scale | 1:1250@A3 | | |
| Designed | GR | 27.08.2024 | | Revision | P02 | |
| Checked | PC | 28.08.2024 | | | | |
| Approved | PC | 28.08.2024 | Project No. | 1090436-XXXX-DR-H-000003 | | |